



**SHRI SHIVAJI EDUCATION SOCIETY, AMRAVATI'S**  
**SHRI SHIVAJI COLLEGE OF ARTS, COMMERCE AND SCIENCE, AKOLA (MS)**  
**Affiliated with Sant Gadge Baba Amravati University, Amravati (MS)**  
**UGC Status- College with Potential for Excellence (Phase II Completed)**  
**DST- FIST (Level "00") Support;**  
**Lead College Status by S. G. B. Amravati University, Amravati (MS)**  
**Website: [www.shivajiakola.ac.in](http://www.shivajiakola.ac.in)**

7.1.2

*The Institution has facilities for alternate sources of energy and energy conservation measures*

Shri Shivaji Education Society, Amravati's

## SHRI SHIVAJI COLLEGE OF ARTS, COMMERCE AND SCIENCE, AKOLA



NAAC Re-Accredited with A grade with CGPA 3.24  
UGC Status of 'College with Potential for Excellence', DST-FIST level-0 Support  
**Lead College status by S.G.B.A.U. Amravati**



Near Shivaji Park, Akola - 444 001 (Maharashtra)  
Phone & Fax : 0724-2410438/2411039  
Website : shivajiakola.ac.in E-mail : principal@shivajiakola.ac.in

**Late Dr. Panjabrao Deshmukh**  
Founder President

**Hon. Harshvardhan Deshmukh**  
President

**Dr. Ambadas L. Kulat**  
Principal

No. SSC/AKL/

Date 15/12/2021

### Declaration

This is to declare that the information, reports, true copies and numerical data etc. furnished in this file as supporting documents is verified by IQAC and found correct.

Hence this certificate.

Dr. A. S. Raut  
**Dr. A. S. Raut**  
IQAC Co-ordinator  
Shri Shivaji College of Arts,  
Commerce & Science, AKOLA

Dr. A. L. Kulat  
**PRINCIPAL**  
Shri Shivaji College, of Arts  
Commerce & Science, AKOLA  
A GRADE C.GPA. 3.24., BY NAAC



Scanned with  
CamScanner

## 7.1.2

*The Institution has facilities for alternate sources of energy and energy conservation measures*

### Index

<b>Sr. No.</b>	<b>Facilities</b>	<b>Page Number</b>
1.	Solar Panel	01 - 03
2.	Biogas Plant	04
3.	Wheeling to the Grid	04 - 06
4.	Sensor Based Tap	07
5.	Use of LED Bulbs in Different Departments	07 - 10
6.	Wind Driven Ventilators and Ventilated Class rooms	11 – 14

**SHRI SHIVAJI COLLEGE OF ART S, COMMERCE AND SCIENCE,  
AKOLA (MS)**

**Report of  
Facilities For Alternate Sources Of Energy And Energy Conservation  
Measures**

**Solar Panels**



**Solar Panel on Morna Building**



**Solar Panel on Zoology Department**





Solar Water Heater for Girls Hostel



Solar Panel base lights and fountain





Lamps on Solar

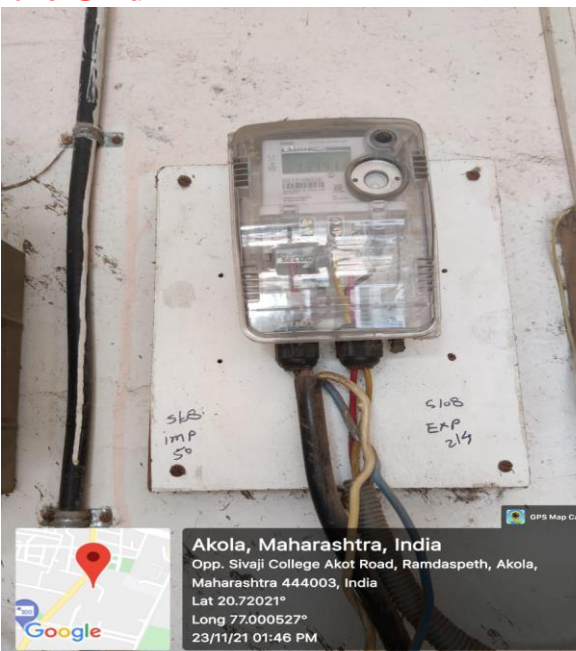


Fountain working on Solar

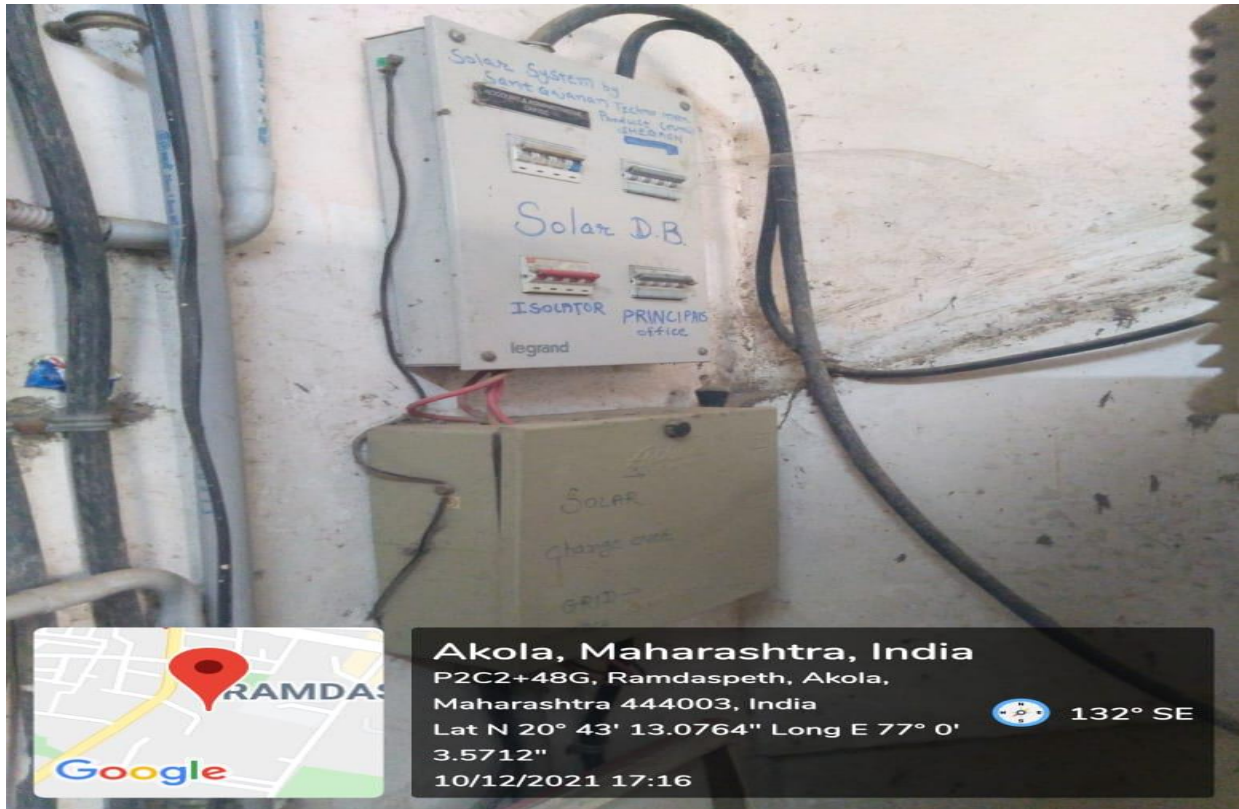
### Biogas Plant



### Wheeling to the Grid








Convertor



श्री शिवाजी शिक्षण संस्था, अमरावती द्वारा संचालित

## श्री शिवाजी कला, वाणिज्य व विज्ञान महाविद्यालय, अकोला




सेकंड इंग्लिश 'अ' (सीबीसीए 2.04) कक्षा, दुर्गाबाई द्वारा 'कॉलेज ऑफ पोस्टेनियरल फॉर एम्प्लॉयर्स' द्वारा प्रस्तुत,  
डीएनटी विन्स्टन सेक्टर -0 योजना प्रकल्प व प्र.वा.वा. अमरावती विद्यापीठ द्वारा 'लीड कॉलेज' दर्जा प्राप्त

**शिवाजी पार्क जवळ, अकोला - ४२४ ००१ (महाराष्ट्र)**

फोन : ०२०-२९३०२८/२९११०२२ मो. ०२००३१३२८८

संकेतस्थळ : shivajikola.ac.in E-mail : principal@shivajikola.ac.in



**डॉ. वंजाराव भाऊसाहेब देशमुख**  
संस्थापक अध्यक्ष  
जवळ डॉ. एमएनसी/एकेएल.


**मा. हर्षवर्धन प्र. देशमुख**  
अध्यक्ष

**डॉ. रामेश्वर मा. शिरो**  
प्राचार्य  
दिनांक : १९/१०/२०१९

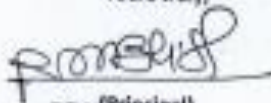
**Summary of Energy Bill for Last Twelve Months – Shivaji College of Arts, Commerce & Science, Akola**

Eight consumer no. bills are as under:

Consumer No		310070132256	310074019659	310070132248	310071403466	310071314749	310070132272	310074001725	310070132299	Total bill (in Rs.)
Sr. No	Month & Year of Electricity Bill	Total Bill (in Rs.)	Total Bill (in Rs.)	Total Bill (in Rs.)	Total Bill (in Ps.)	Total Bill (in Rs.)	Total Bill (in Rs.)	Total Bill (in Rs.)	Total Bill (in Rs.)	
1	Oct-19	-	-	-	21340	6460	2360	2840	2340	35340
2	Sep-19	48875	44441	9350	20760	5480	2300	1630	1620	134436
3	Aug-19	51521	24004	5790	22520	6300	2390	2030	3650	118205
4	Jul-19	51247	73645	5390	19980	5470	1650	1470	1370	160222
5	Jun-19	32739	351	6850	26290	4960	2720	1320	2550	77780
6	May-19	33968	351	9180	32640	5370	2710	1880	3560	89659
7	Apr-19	36950	40431	6120	35830	8600	4460	3310	6160	141861
8	Mar-19	51487	63107	1930	21550	4570	1740	7420	6400	158204
9	Feb-19	42257	350	1450	19790	3510	-1060	4080	3120	73497
10	Jan-19	39075	15585	1860	17470	2950	-3770	2350	2350	77869
11	Dec-18	31626	19343	540	-	-	-	-	-	51508
12	Nov-18	26166	25913	11820	18330	2780	-470	1120	1420	87079
13	Oct-18	51069	81003	11350	23890	3970	900	380	3880	176442
<b>Total bill in Rs.</b>										<b>1382103</b>



Yours truly,



**PRINCIPAL**  
Shri Shivaji College, of Arts  
(Shivaji College of Arts, Commerce & Science, Akola)  
\* GRADE C, GPA, 3.24., BY NAAC

**Sensor-based energy conservation**



**Sensor Based Tap**  
**Use of LED bulbs**



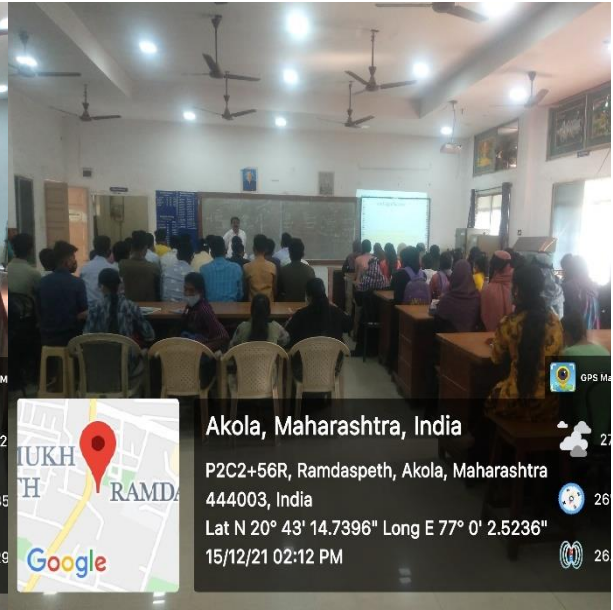
**Shri Shivaji College of Arts, Commerce and Science, Akola (MS)**



Department of Biochemistry



AV Hall

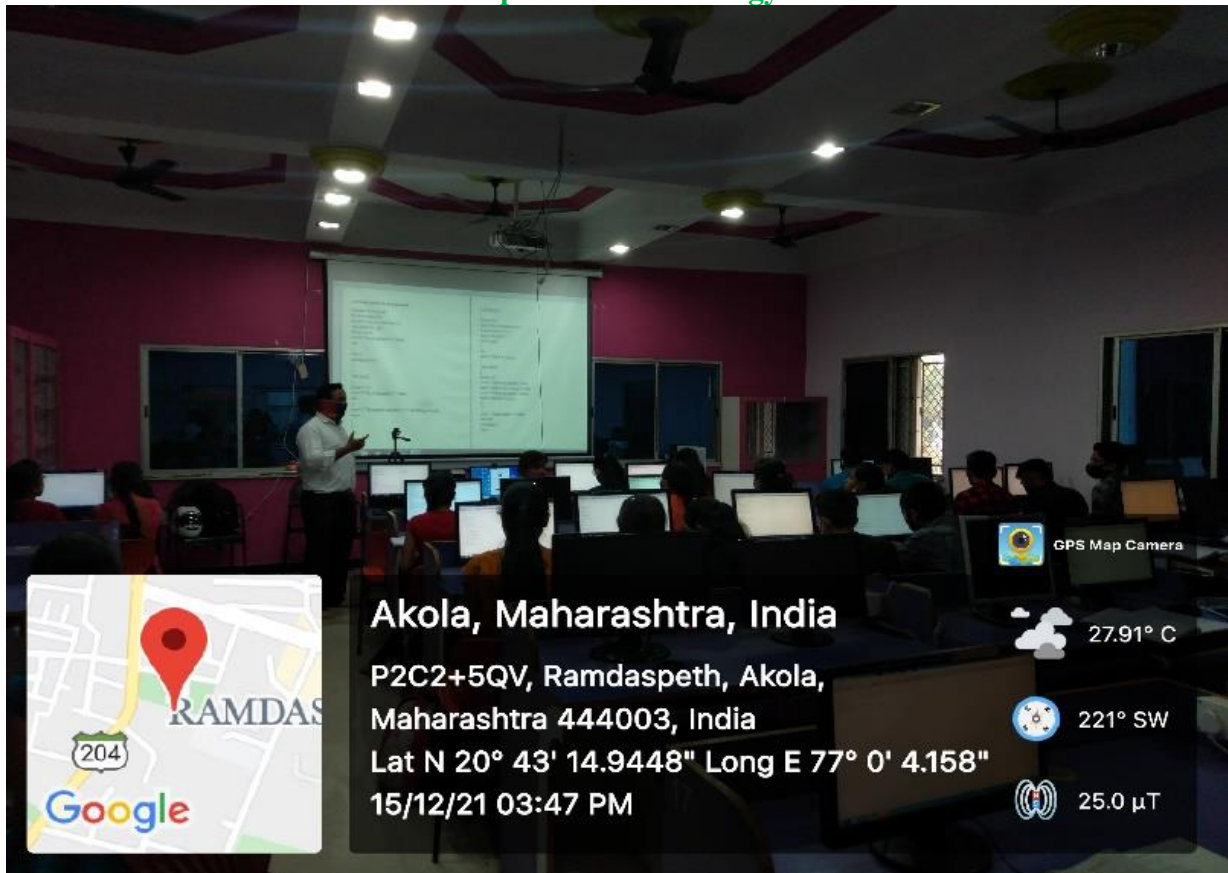


Akola, Maharashtra, India  
P2C2+56R, Ramdaspath, Akola,  
Maharashtra 444003, India  
Lat N 20° 43' 14.322" Long E 77° 0' 2.6532"  
15/12/21 01:45 PM



Akola, Maharashtra, India  
P2C2+56R, Ramdaspath, Akola, Maharashtra  
444003, India  
Lat N 20° 43' 14.7396" Long E 77° 0' 2.5236"  
15/12/21 02:12 PM

Department of Zoology



Akola, Maharashtra, India  
P2C2+5QV, Ramdaspath, Akola,  
Maharashtra 444003, India  
Lat N 20° 43' 14.9448" Long E 77° 0' 4.158"  
15/12/21 03:47 PM

GPS Map Camera

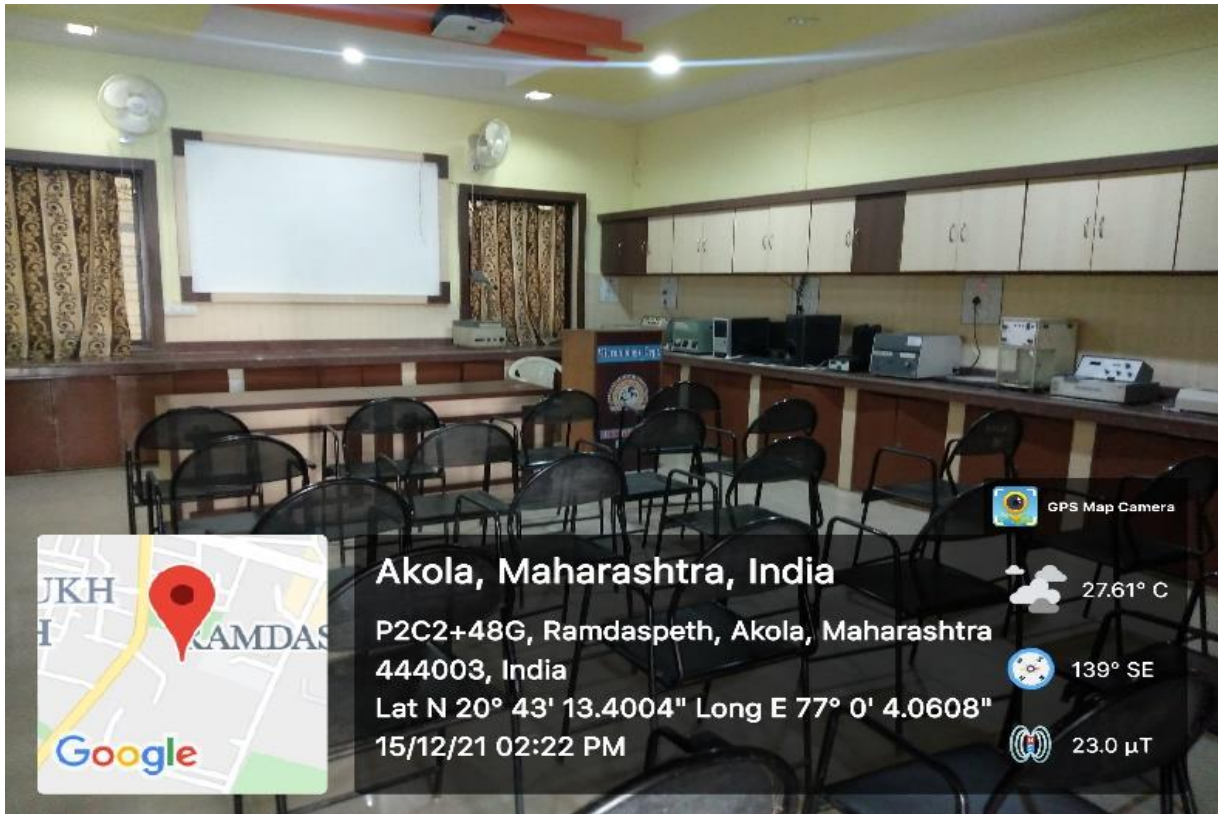
27.91° C

221° SW

25.0 μT

Department of Computer Science





Department of Microbiology



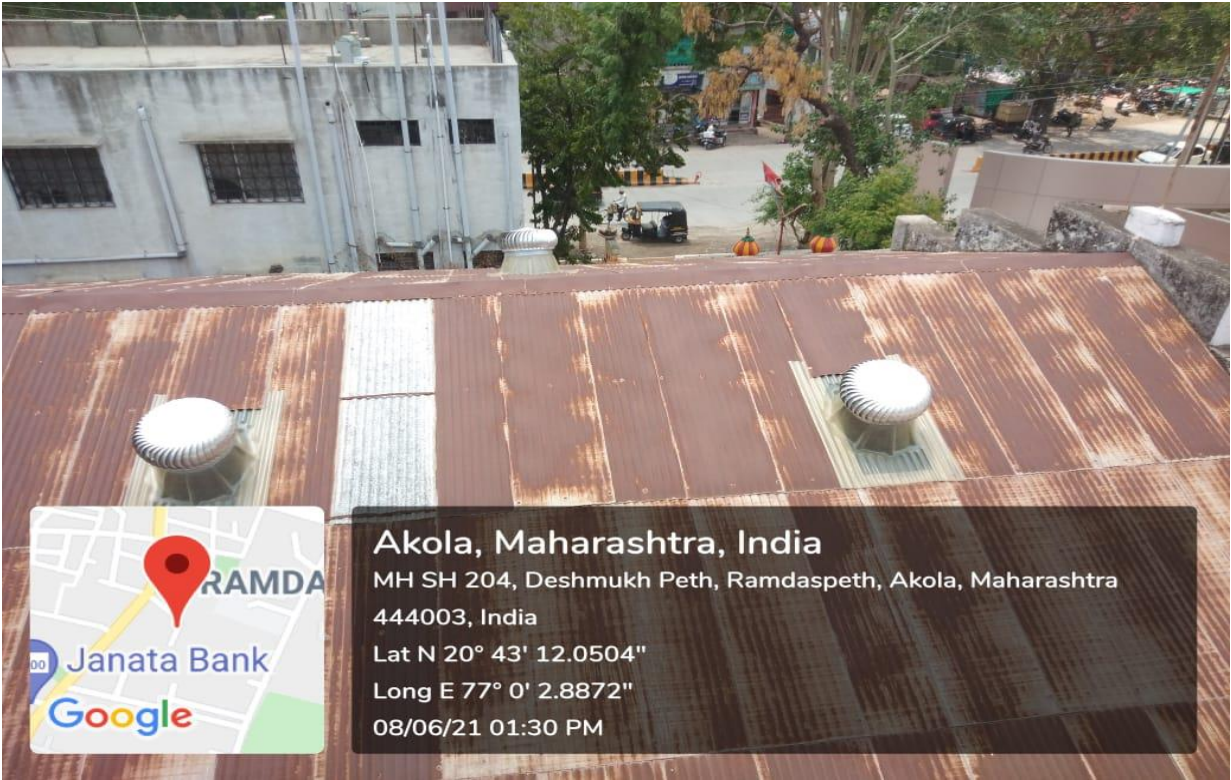
Library Hall



**Reading Hall**



Wind Driven Ventilators





Well Ventilated and airy classrooms minimizes the use of electricity



